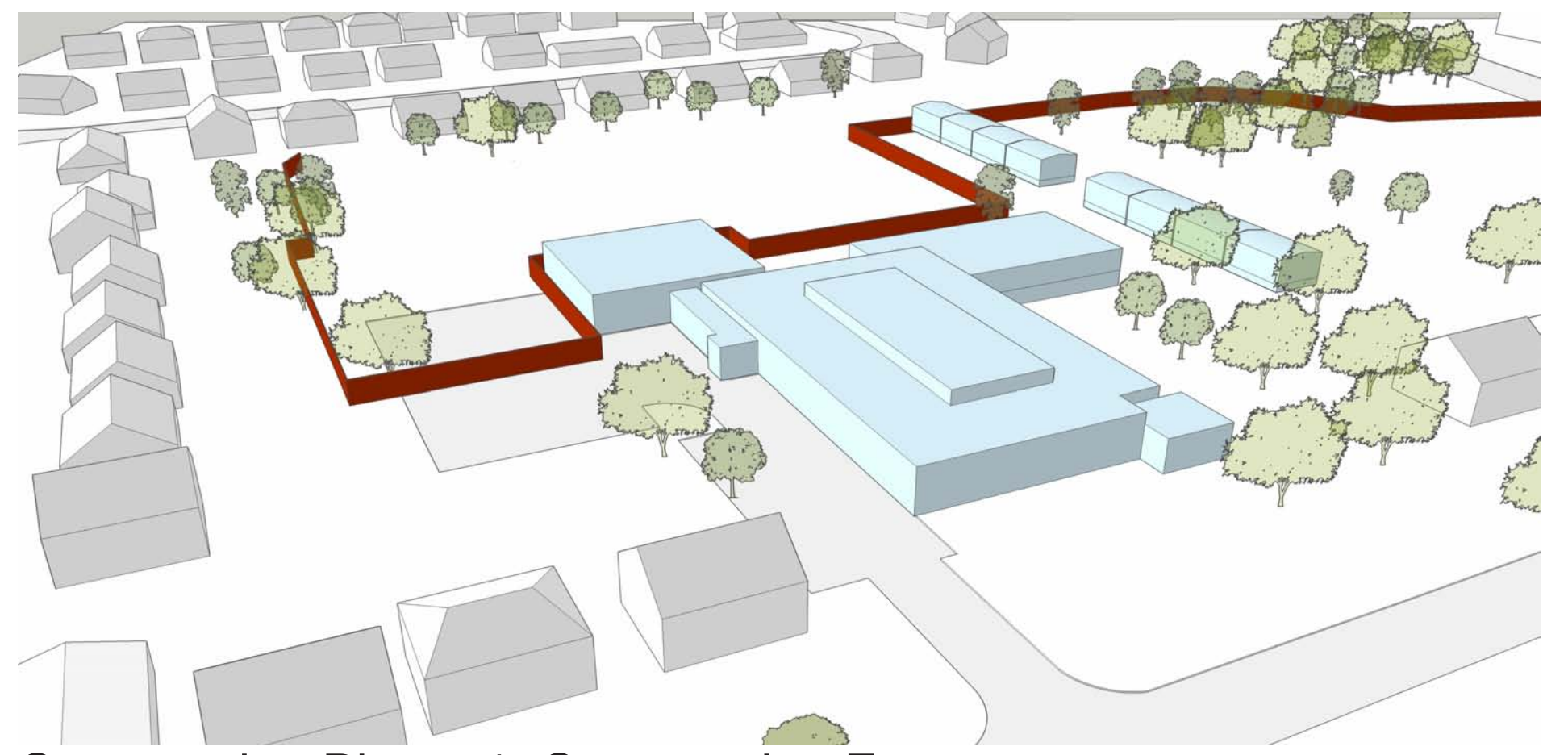
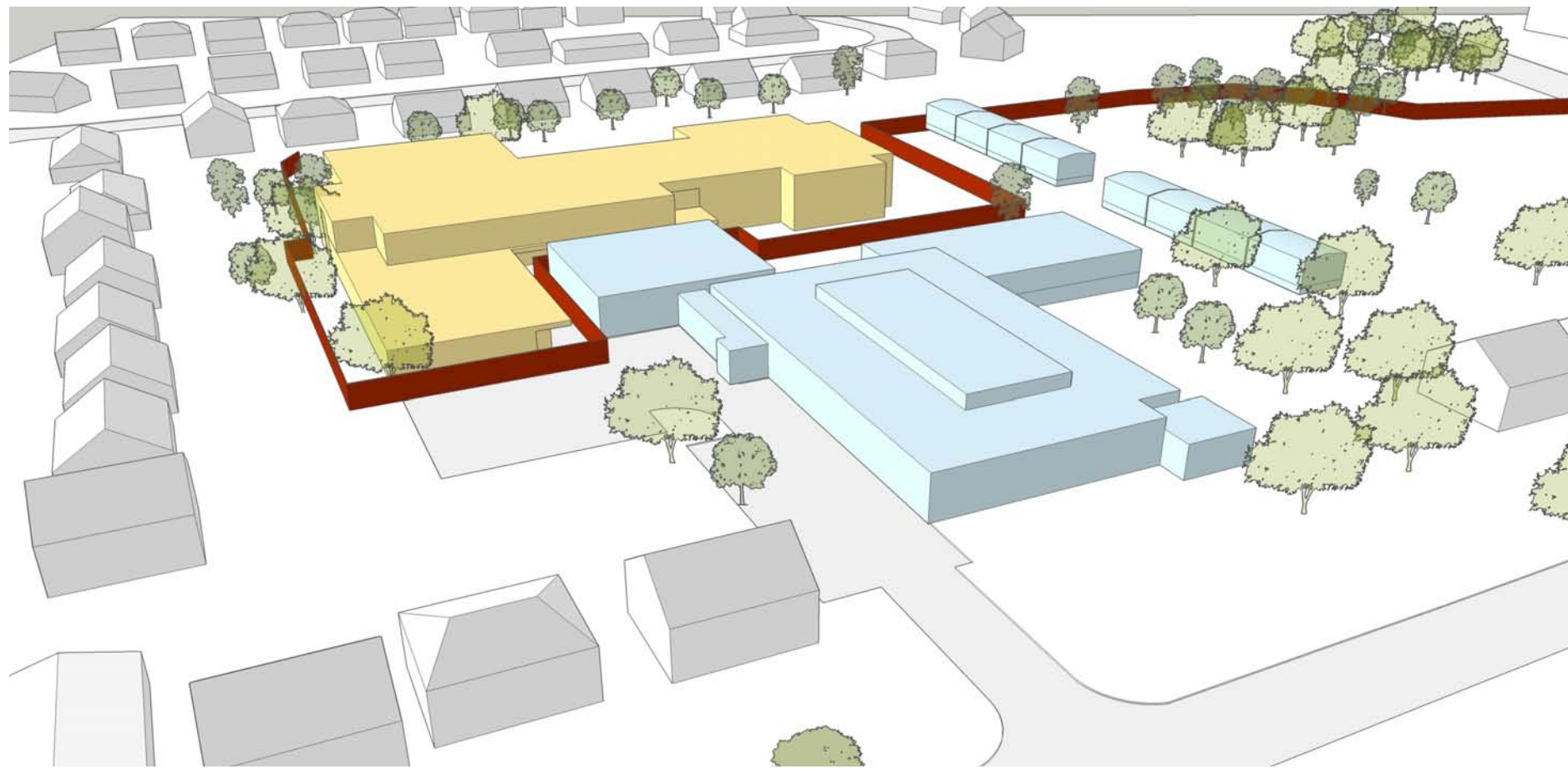


Existing Condition



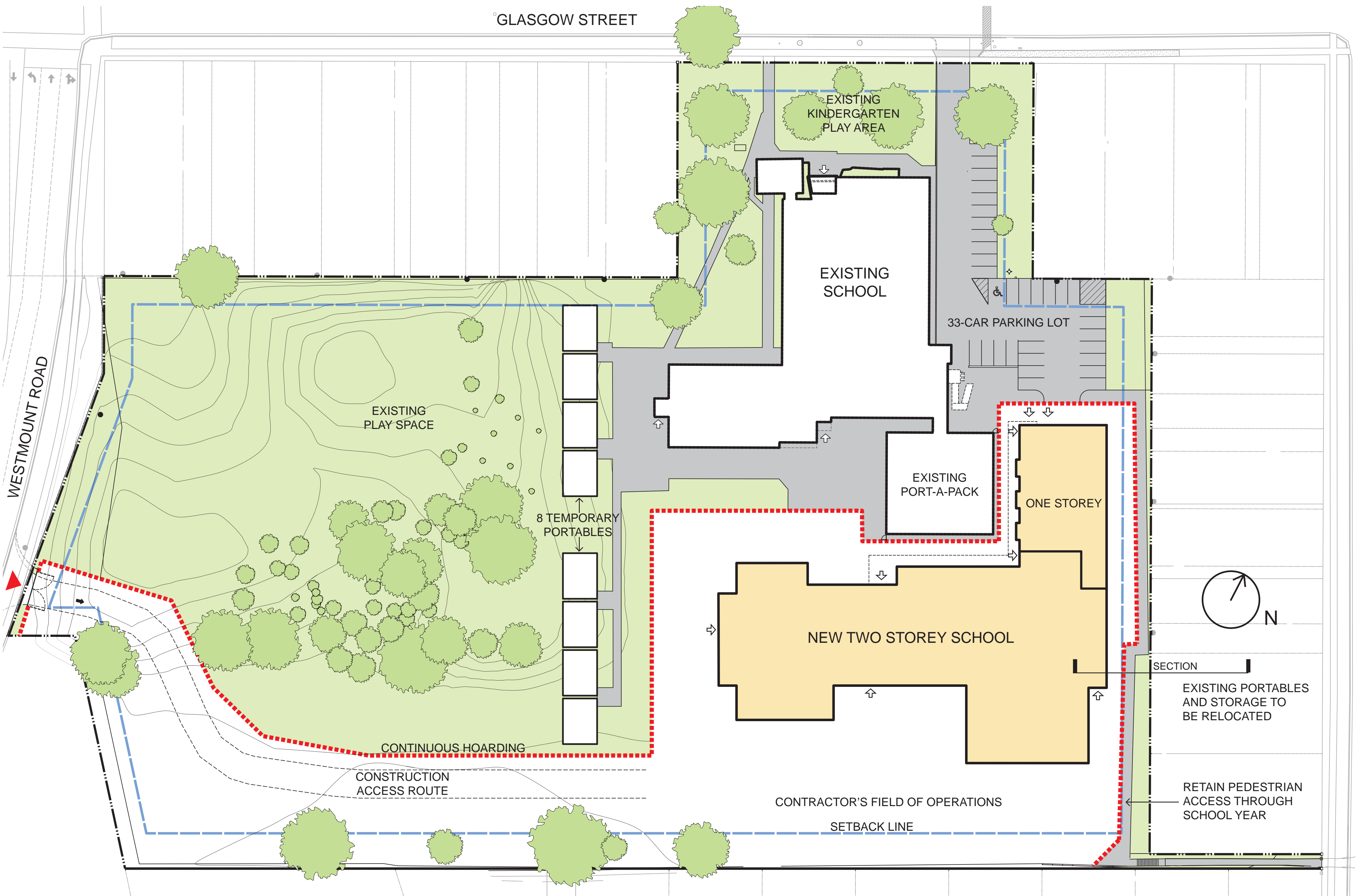
Construction Phase 1: Construction Fence



Construction Phase 2: New School Construction  
(existing school to remain operational)

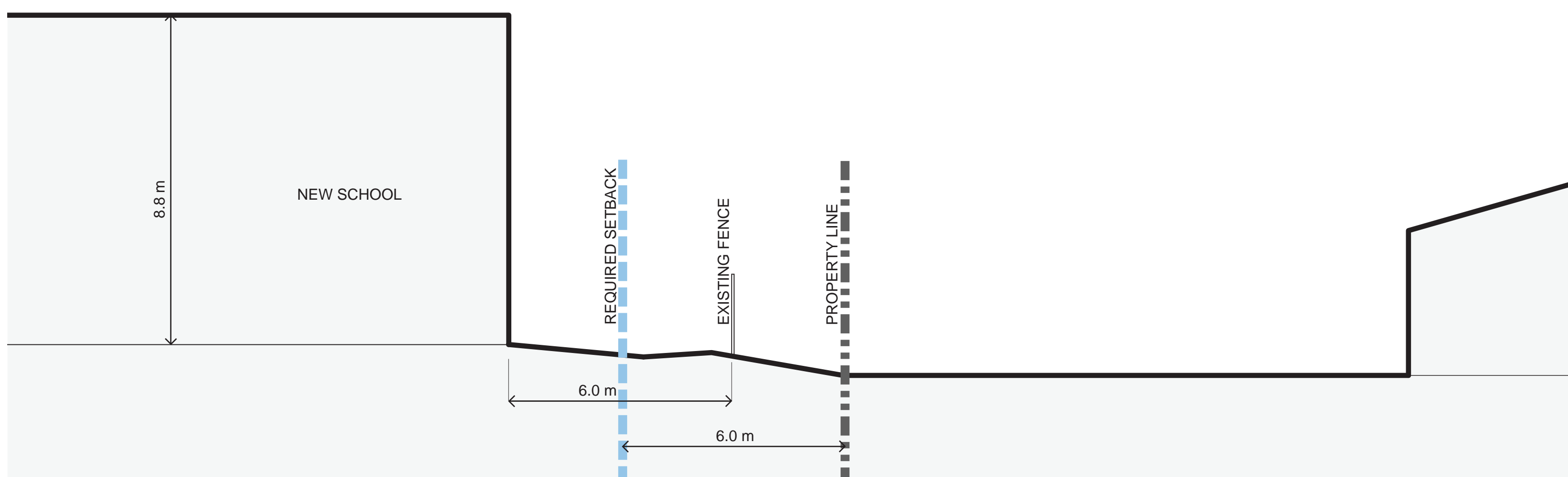


Construction Phase 3: Demolition of Existing School  
& Completion of Site Work



Construction Site Plan 1 : 500

NOTE: NO MAXIMUM BUILDING HEIGHT  
ACCORDING TO ZONING BY-LAW



Partial Site Section 1 : 100

# Construction Site Plan & Sequencing

WESTMOUNT PUBLIC SCHOOL, KITCHENER ON

February 2014